



Single Tone Buzzer Interval Buzzer

Kiepe EIB

Description

For the detection of various functions in rail vehicles and buses, devices are required which emit a short buzzing tone, independent of the length of operation, or a repeating tone for a defined period.

Examples of application:

- Passenger's signal to stop,
- Starting signal,
- Warning signal when closing doors,
- Signalling a current interruption.

Technical data

Nominal Voltage	DC 24 V ... 110 V, +25 / -30 %
Operating current DC 24 V, approx.	15 mA ± 10 %
Permissible ambient Temperature	-25 °C ... +70 °C
Protection according to DIN 40050	IP 00

Ordering formula

EIB 1 2 3

Type

Device form

- 1 = Single Tone Buzzer
2 = Interval Buzzer

Duration of buzz

Single Tone Buzzer

	Duration of tone	Reset time
1	110 ms	> 20 ms
2	250 ms	
3	330 ms	
4	400 ms	
5	600 ms	
6	900 ms	

Interval Buzzer

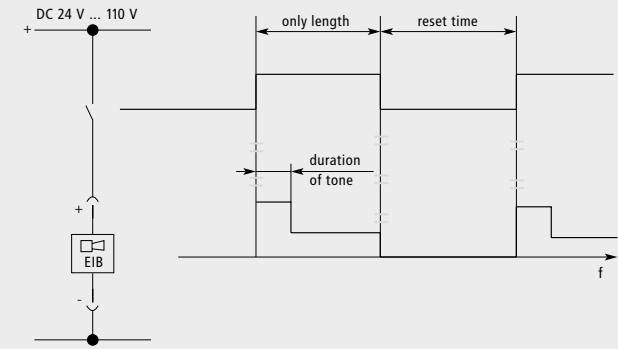
	Duration of interval	Reset time
1	140 ms	> 20 ms
2	315 ms	
3	420 ms	
4	560 ms	
5	800 ms	
6	1200 ms	

Tone

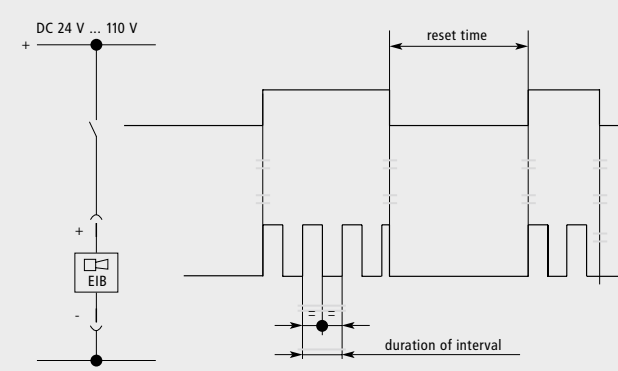
	Loudness dB(A)	Soundfrequency, approx.
1	75	2,5 kHz
2	65	
3	55	

Loudness at 1m distance at rated voltage

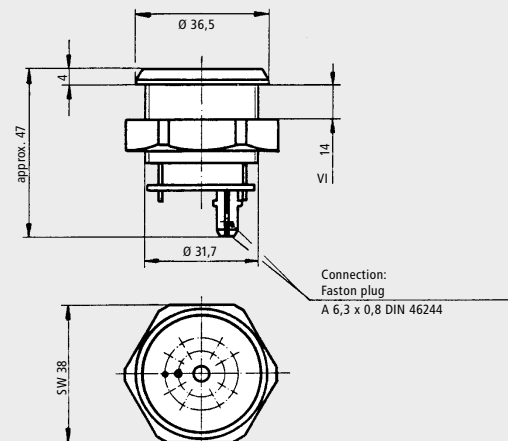
Single Tone Buzzer



Interval Buzzer



Dimensions



Subject to change without notice.

Vossloh Kiepe GmbH
Kiepe-Platz 1 • D-40599 Düsseldorf (Germany)
Phone: +49(0)211/7497-0
Telefax: +49(0)211/7497-300
info@vkd.vossloh.com
www.vossloh-kiepe.com